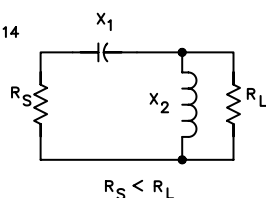
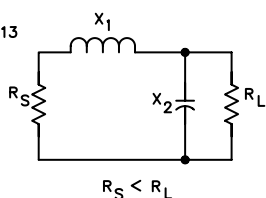
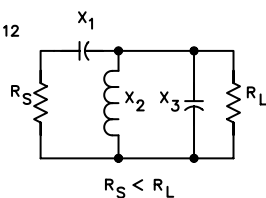
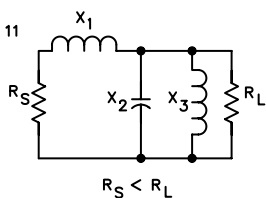
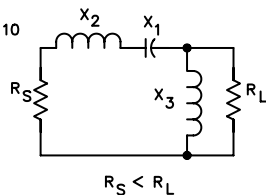
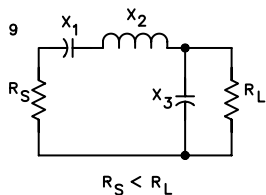
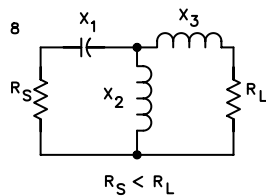
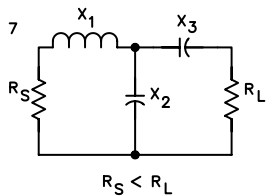
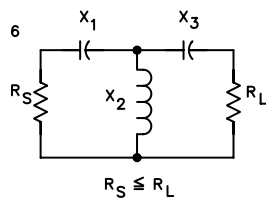
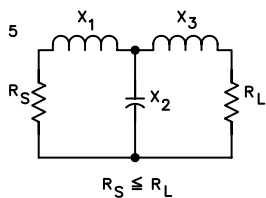
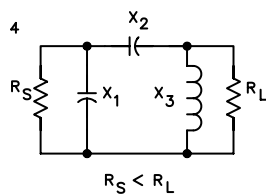
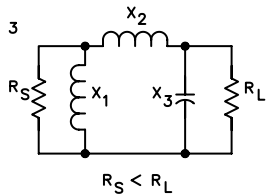
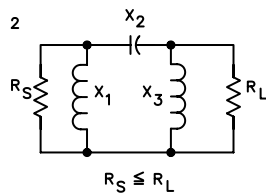
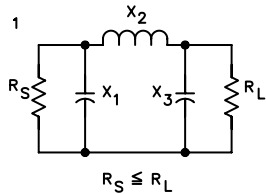


LOW-PASS NETWORKS

HIGH-PASS NETWORKS



This page is an update to the 1999 ARRL Handbook Software package that is available at <http://www.arrl.org/notes/> and to the ARRL Handbook CD Version 3.0. Both contain the NBMATCH program to which this update refers.

This figure shows the 14 possible network configurations used by NBMATCH.BAS. Refer to this figure and enter the desired network by number when you run the program. Note that low-pass networks have an odd identifying number while high-pass networks have an even identifying number.